

# DC EXHIBIT F



**YAMASAKI**  
LANDSCAPE ARCHITECTURE

JEFF AMBROSIA, ASLA C4057

1223 HIGH STREET  
AUBURN, CALIFORNIA 95603  
(530) 885-0040  
FAX (530) 885-0042  
www.yamasaki-la.com

**SAMS AIRPACK PLUS  
LANDSCAPE DEVELOPMENT PLANS  
7100 GALILEE ROAD  
ROSEVILLE, CALIFORNIA**

These drawings are instruments of service and are the property of Yamasaki Landscape Architecture. All designs and other information on the drawings are for the use on the specified project and shall not be used otherwise without the express written permission of Yamasaki Landscape Architecture.

Sheet Title  
**PLANTING PLAN**



No.	Date	Revision
▲		
▲		
▲		
▲		

Project Mgr.: JMA Sheet No.:  
Drawn By: JMA  
Scale: 1"=20'-0" **L1.1**  
Date: 4/20/22  
File Name: SAP PL of \_\_\_\_\_ sheets

## PLANT SCHEDULE

TREES	CODE	BOTANICAL / COMMON NAME	SIZE
	LAG NAT	Lagerstroemia indica x fauriei 'Natchez' / Natchez Crape Myrtle	24" box
	PIS KEI	Pistacia chinensis 'Keith Davey' / Keith Davey Chinese Pistache	15 gal
	PLA COL	Platanus x acerifolia 'Columbia' / London Plane Tree	15 gal
	QUE WIS	Quercus wislizeni / Interior Live Oak	15 gal
	CAL LIT	Callistemon viminalis 'Little John' / Dwarf Weeping Bottlebrush	5 gal
	CIS PRO	Cistus salvifolius 'Prostratus' / Sageleaf Rockrose	5 gal
	GRE NOE	Grevillea x 'Noellii' / Noel Grevillea	5 gal
	LAV STO	Lavandula stoechas / Spanish Lavender	5 gal
	NAN COM	Nandina domestica 'Compacta' / Dwarf Heavenly Bamboo	5 gal
	RHA EVE	Rhamnus californica 'Eve Case' / California Coffeeberry	5 gal
	RHA JAC	Rhapiolepis indica 'Jack Evans' / Indian Hawthorn	5 gal
	ROS COL	Rosmarinus officinalis 'Collingwood Ingram' / Rosemary	1 gal
	SAL BAR	Salvia leucantha 'Santa Barbara' / Mexican Bush Sage	1 gal
	MUH RIG	Muhlenbergia rigens / Deer Grass	1 gal
	ACA COG	Acacia cognata 'ACCOG01' / Cousin Itt Little River Wattle	1 gal
	ARC RAD	Arctostaphylos uva-ursi 'Radiant' / Radiant Kinnikinnick	1 gal
	COT LOW	Cotoneaster dammeri 'LowFast' / Lowfast Bearberry Cotoneaster	1 gal
	ROS DWA	Rosmarinus officinalis 'Prostratus' / Dwarf Rosemary	1 gal
	BIO SOD	Biofiltration Sod / Avail. from Delta Bluegrass	sod

POTENTIAL SHRUBS	CODE	BOTANICAL / COMMON NAME	SIZE
	LAG NAT	Lagerstroemia indica x fauriei 'Natchez' / Natchez Crape Myrtle	24" box
	PIS KEI	Pistacia chinensis 'Keith Davey' / Keith Davey Chinese Pistache	15 gal
	PLA COL	Platanus x acerifolia 'Columbia' / London Plane Tree	15 gal
	QUE WIS	Quercus wislizeni / Interior Live Oak	15 gal
	CAL LIT	Callistemon viminalis 'Little John' / Dwarf Weeping Bottlebrush	5 gal
	CIS PRO	Cistus salvifolius 'Prostratus' / Sageleaf Rockrose	5 gal
	GRE NOE	Grevillea x 'Noellii' / Noel Grevillea	5 gal
	LAV STO	Lavandula stoechas / Spanish Lavender	5 gal
	NAN COM	Nandina domestica 'Compacta' / Dwarf Heavenly Bamboo	5 gal
	RHA EVE	Rhamnus californica 'Eve Case' / California Coffeeberry	5 gal
	RHA JAC	Rhapiolepis indica 'Jack Evans' / Indian Hawthorn	5 gal
	ROS COL	Rosmarinus officinalis 'Collingwood Ingram' / Rosemary	1 gal
	SAL BAR	Salvia leucantha 'Santa Barbara' / Mexican Bush Sage	1 gal

POTENTIAL GRASSES	CODE	BOTANICAL / COMMON NAME	SIZE
	MUH RIG	Muhlenbergia rigens / Deer Grass	1 gal

POTENTIAL GROUND COVERS	CODE	BOTANICAL / COMMON NAME	SIZE	SPACING
	ACA COG	Acacia cognata 'ACCOG01' / Cousin Itt Little River Wattle	1 gal	60" o.c.
	ARC RAD	Arctostaphylos uva-ursi 'Radiant' / Radiant Kinnikinnick	1 gal	48" o.c.
	COT LOW	Cotoneaster dammeri 'LowFast' / Lowfast Bearberry Cotoneaster	1 gal	60" o.c.
	ROS DWA	Rosmarinus officinalis 'Prostratus' / Dwarf Rosemary	1 gal	48" o.c.

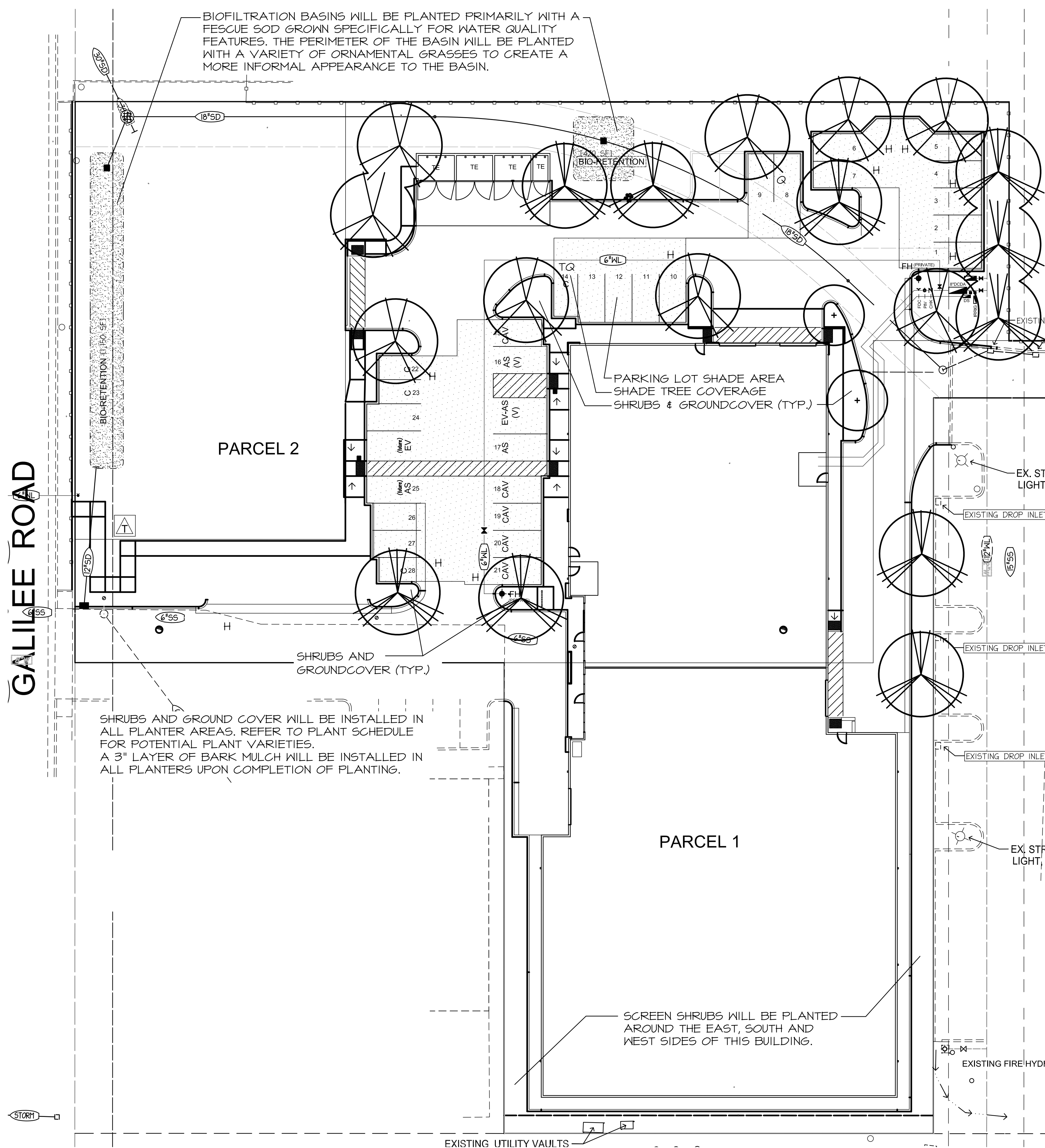
  

SEED/SOD	CODE	BOTANICAL / COMMON NAME	SIZE	SPACING
	BIO SOD	Biofiltration Sod / Avail. from Delta Bluegrass	sod	

## PARKING LOT SHADE CALCULATIONS

TREE SYMBOL	100%	75%	50%	25%
LAG NAT				
PIS KEI			5 (48) = 2,405	
PLA COL		1 (722) = 722	4 (48) = 1,924	1 (240) = 240

PARKING LOT AREA 8,120 s.f.  
SHADE REQUIRED (50%) 4,060 s.f.  
TOTAL SHADE **5,291 s.f.**  
PERCENT SHADE **65%**



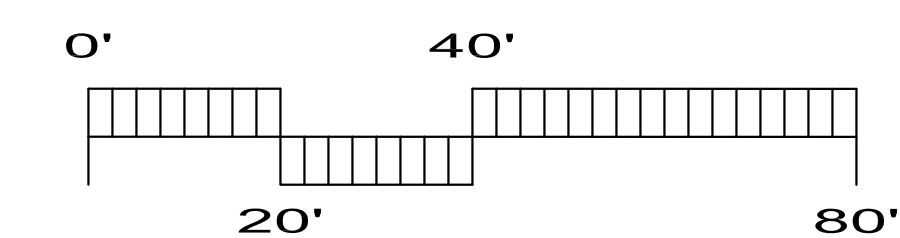
## PLANTING STATEMENT

The proposed landscape plant palette consists of low water use shrubs, groundcover, trees, and ornamental grasses that are considered low maintenance and hardy. Choice of plants is guided by considerations of solar exposure and climate conditions of the site. Plant selection aims for longevity by selecting plants that are long lived varieties of trees, shrubs, groundcover, and grasses.

Shrubs and groundcover are minimum #1 size. Trees are minimum #15 size. Plant materials shall be spaced to provide substantial cover, but also to allow adequate room to mature into their natural form and ultimate size without required pruning.

## IRRIGATION STATEMENT

The irrigation system will be serviced by a new point of connection. The irrigation design will consist of low volume point source drip irrigation. Proposed trees shall utilize bubbler irrigation to encourage deep root watering. The overall irrigation system will be designed with a smart irrigation controller. A weather sensor will be used to automatically adjust duration of application in accordance with recent weather conditions based on evapotranspiration. Maximum water allowance will be determined by State code. To also be consistent with the planting design, the irrigation design will create separate irrigation stations by hydrozone, locating plants of different water and solar needs into groups.



S:\Projects\2022\04\2022\_SAMS\_Airpack\_Plus\DC\DC\_SAP\_PL.dwg 4/20/22 3:59 PM Jeff Ambrosia